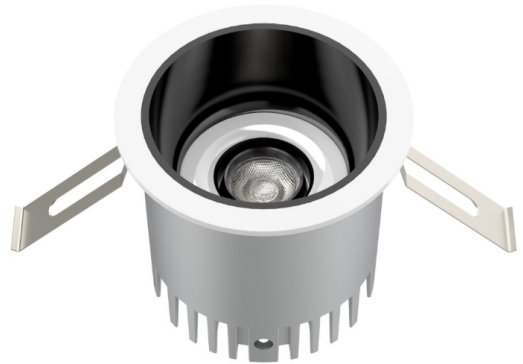


HISENS

HSNW581-DOWNLIGHT

Downlight&Spotlight



SPECIFICATIONS

Wattage: 24W	Input Voltage: 220V
Frequency: 50/60Hz	Dia (N2): 83mm
Cut Out(N2): 75mm	Height(N2): 68mm
CCT: 3000K	IP Rating: IP20
Beam Angle: 160deg	Body Color: White
Lead Time: 1-2 Days	Working temperature: 20-40°C
LED Type: COB LED Chip	Color Rendering Index: 99Ra
Lifetime: 50000hours	Body Material: Aluminium

