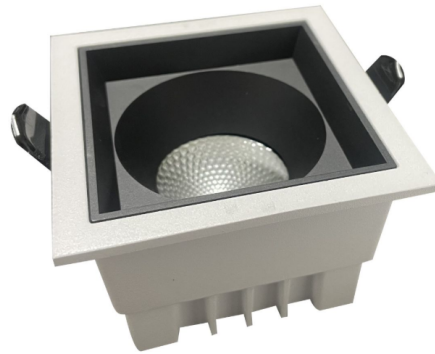


HISENS

HSNW528-2/3/4/6-DOWNLIGHT

Downlight&Spotlight



SPECIFICATIONS

Wattage: 12W / 18W / 30W / 40W	Input Voltage: 220V
Frequency: 50/60Hz	Cut Out(N2): 75mm / 100mm / 125mm / 160mm
Length(N2): 86mm / 110mm / 140mm / 175mm	Width(N2): 86mm / 110mm / 140mm / 175mm
Height(N2): 58mm / 65mm / 78mm / 88mm	CCT: 3000K/4000K/6000K
IP Rating: IP20	Lumen: 1000lm / 1500lm / 3000lm / 4000lm
Beam Angle: 60deg	Body Color: White
Lead Time: 1-2 Days	Working temperature: 20-40°C
LED Type: COB LED Chip	Color Rendering Index: 80Ra
Lifetime: 50000hours	Body Material: Aluminium

