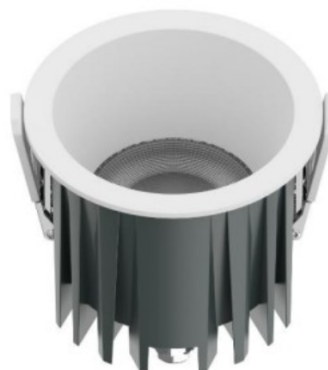


H I S E N S

HS-WY-DWNL-(IP65/IP54 Waterproof) (P)

Downlight&Spotlight



SPECIFICATIONS

Wattage: 10W / 15W / 20W / 30W	Input Voltage: 220V
Frequency: 50/60Hz	Dia (N2): 83mm / 103mm / 132mm / 160mm
Cut Out(N2): 75mm / 95mm / 120-125mm / 145-150mm	Height(N2): 65mm / 70mm / 75mm / 80mm
CCT: 3000K/4000K/6000K	IP Rating: IP65
Lumen: 810lm / 1310lm / 2210lm / 2510lm	Beam Angle: 24deg / 50deg
Body Color: Black / White	Lead Time: 1 week
Spotlight Type: waterproof spotlight	CRI: 95
Warranty: 3 Years	Body Material: Aluminium