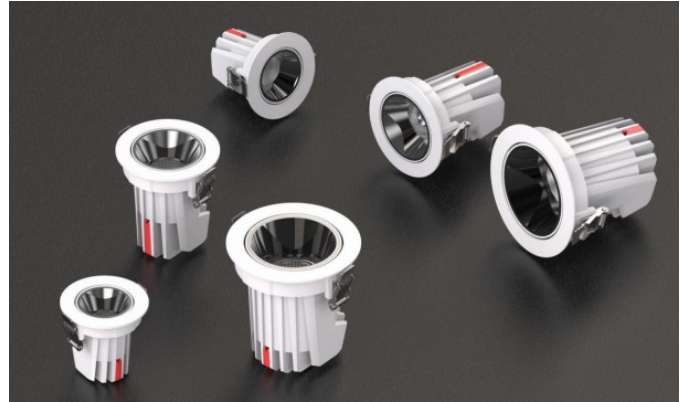


HISENS

HS-WY-ATS(P)

Downlight&Spotlight



SPECIFICATIONS

Wattage: 10W / 15W / 25W	Input Voltage: 220V
Frequency: 50/60Hz	Dia (N2): 85mm / 104mm / 132mm
Cut Out(N2): 75mm / 95mm / 125mm	Height(N2): 80mm / 108mm / 74mm
CCT: 2700K-6500K	IP Rating: IP44
Lumen: 810lm / 1310lm / 2210lm	Beam Angle: 24deg
Body Color: Black	Lead Time: 1 week
CRI: 90+	LED Type: COB LED Chip
Warranty: 3 Years	