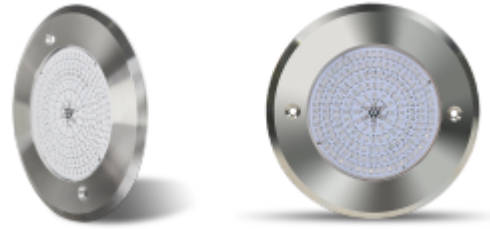


# HISENS

## HS-HTSM441P1SL

Underwater Light



### SPECIFICATIONS

Wattage: 35W	Input Voltage: 12V/24V
Frequency: 50/60Hz	Dia (N2): 260mm
CCT: can be customized	IP Rating: IP68
Beam Angle: 120deg	Body Color: White
Lead Time: 2 week	Body Material: SS316+Resin Filled
LED Count: 441Nos.	Mounting Type: Wall mount
Shape: Round	Brand: Hisens
Warranty: 1 Year	Lifetime: upto 30000hours
Additional Feature: CW/WW/Red/Green/Blue/RGB	

